

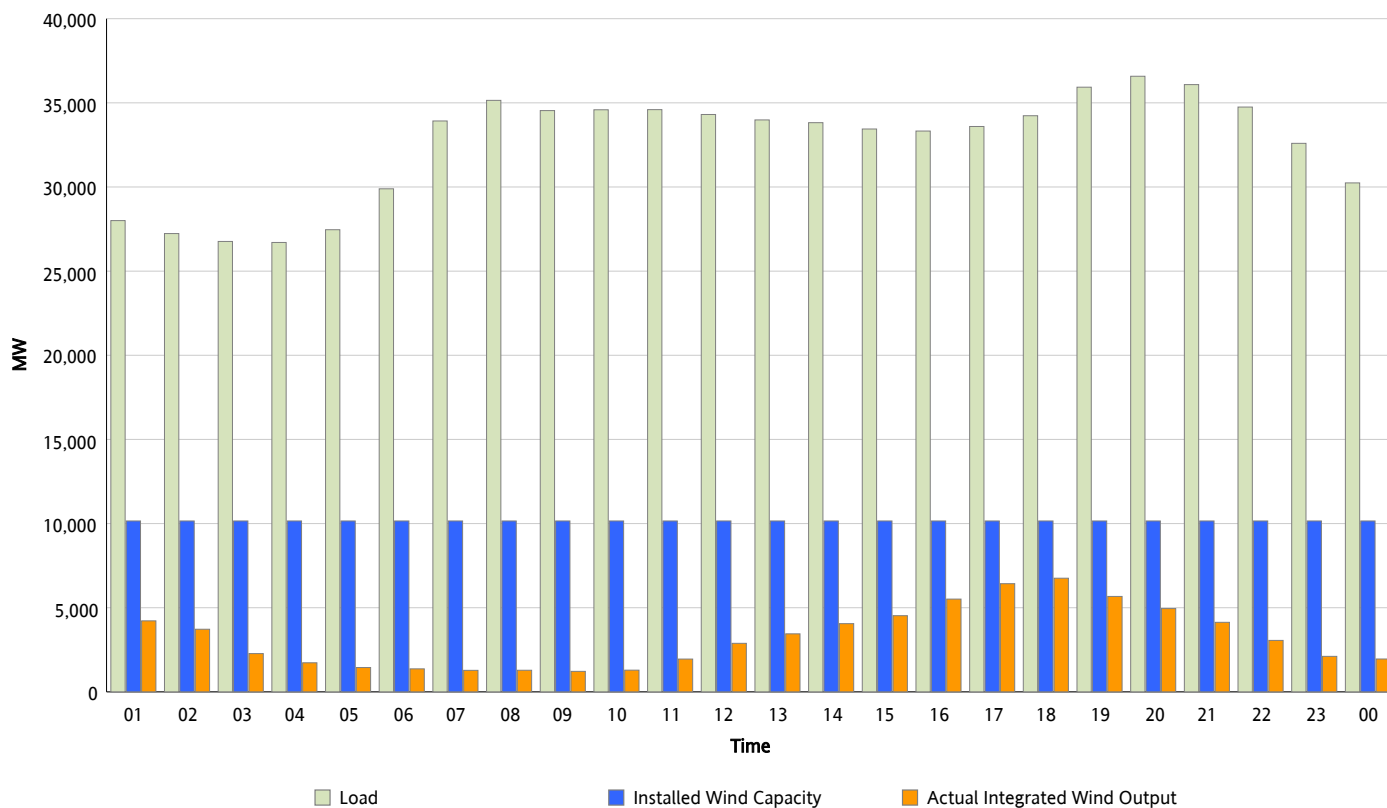


ERCOT Grid Operations

Wind Integration Report : 02/12/2013

| | |
|----------------------|-----------|
| Peak Load | 36,579 MW |
| Load Peak Hour (HE) | 20 |
| Wind Over Peak | 4,949 MW |
| Wind Record 02/09/13 | 9,481 MW |
| Max Wind Value* | 6,895 MW |
| Wind Peak Time | 17:24 |
| Wind Integration % | 20.23 % |

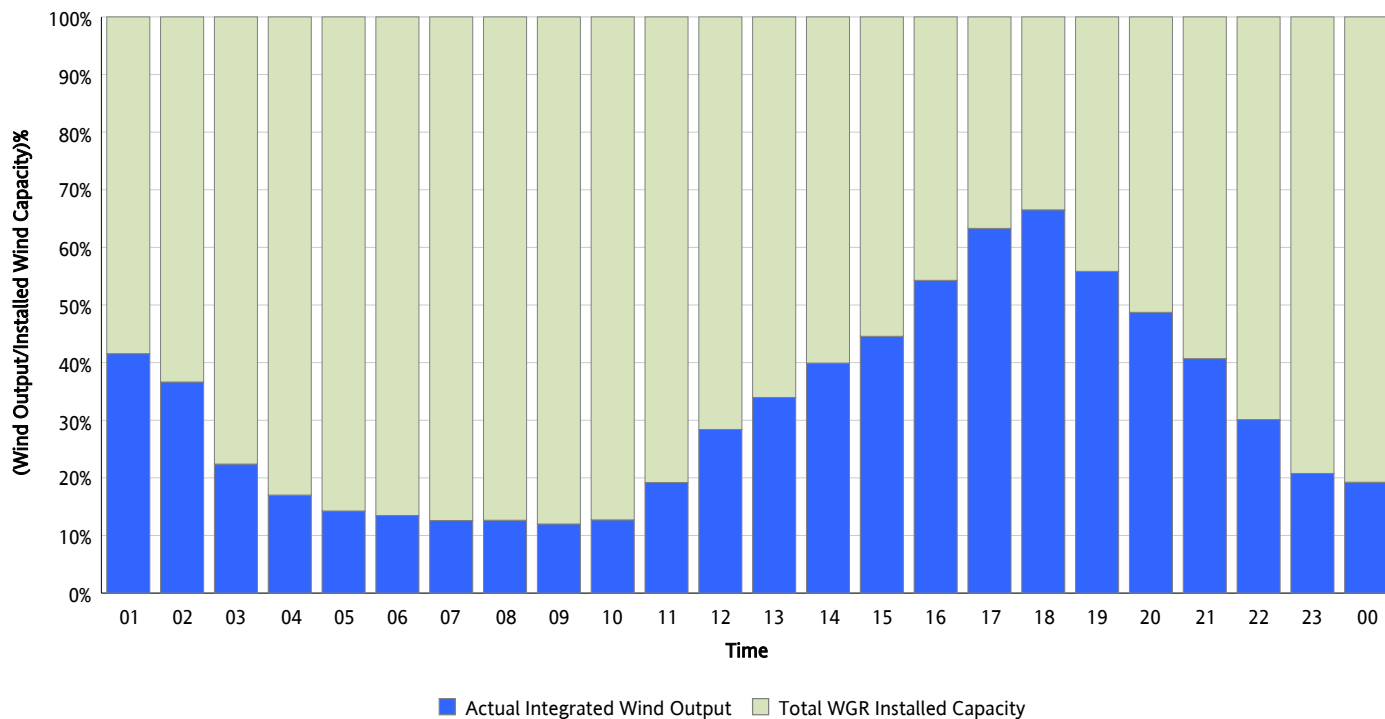
Hourly Average Actual Load vs. Actual Wind Output
02/12/2013



* Wind Record and Wind Max represent instantaneous values and the rest of the values are integrated over the hour

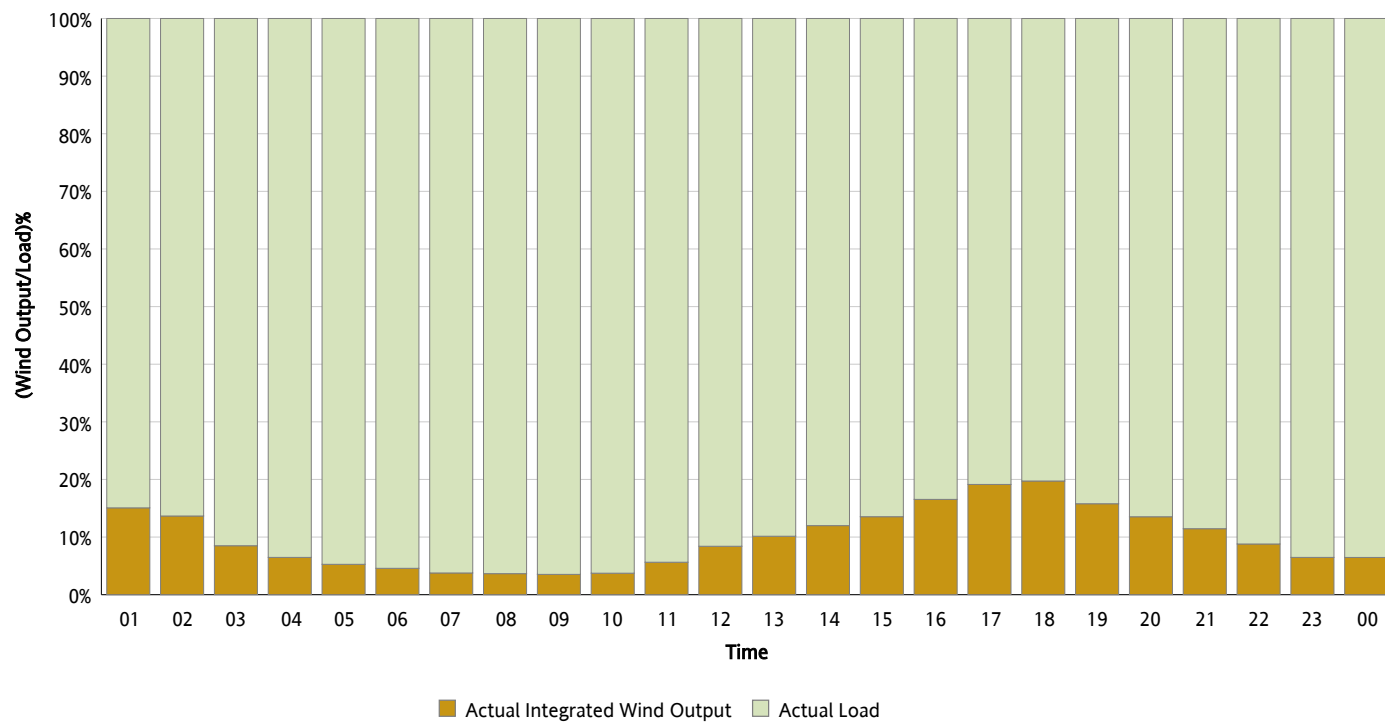
Actual Wind Output as a Percentage of the Total Installed Wind Capacity

02/12/2013



Actual Wind Output as a Percentage of the ERCOT Load

02/12/2013



ERCOT Load vs. Actual Wind Output

02/05/2013 - 02/12/2013

